

# FEATURE BLAST



## Andover Continuum RoamIO<sub>2</sub> BACnet Service Tool

### Product Description

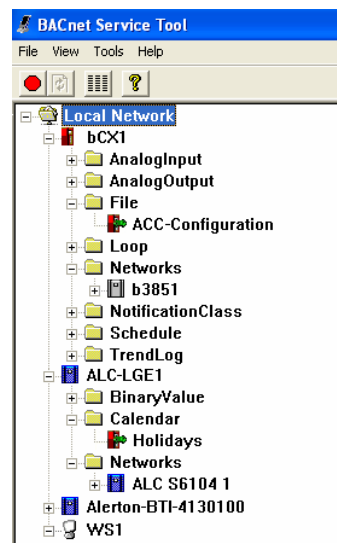
The RoamIO<sub>2</sub> Service Tool is a compact hardware adapter with software applications, which allow you to quickly connect to any Andover Continuum system using a Pocket PC or laptop. Designed to clip onto a technician's belt, this tool gives you the freedom of mobility through a local connection to a field bus or Ethernet network.

The RoamIO<sub>2</sub> Service Tool comes with software to run the adapter as a BACnet Service Tool on either a Windows Pocket PC or laptop. The BACnet Service Tool not only discovers and edits Andover Continuum BACnet controllers, but it also works with BACnet devices from third-parties.

### Auto-Discover BACnet Devices

Discover every Andover Continuum and third-party BACnet device on the network with a single click of a button. The explorer-like tree provides a great visualization of the entire BACnet system. Choose between different views to display the network as you like it.

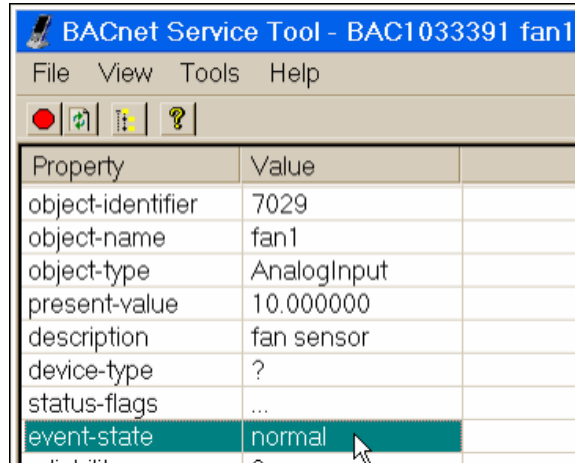
*RoamIO<sub>2</sub> makes third-party integration with BACnet simple.*



## View and Edit Points

Expanding the controller reveals the objects within the device. Switching to the details view displays all of the BACnet properties and Andover Continuum attributes of the selected object allowing you to edit writable values to enable/disable, change values, set descriptions, and so on.

*Local control makes service easy.*



The screenshot shows the 'BACnet Service Tool - BAC1033391 fan1' window. It has a menu bar with 'File', 'View', 'Tools', and 'Help'. Below the menu bar is a toolbar with icons for a red stop button, a green refresh button, a yellow warning button, and a question mark. The main area contains a table with two columns: 'Property' and 'Value'. The 'event-state' row is highlighted in green, and a mouse cursor is pointing at the 'normal' value.

Property	Value
object-identifier	7029
object-name	fan1
object-type	AnalogInput
present-value	10.000000
description	fan sensor
device-type	?
status-flags	...
event-state	normal

## System Management Tools

The BACnet Service Tool provides management tools beyond network exploration and point editing. These management tools include user based security, a utility for updating operating systems of Andover Continuum controllers and the RoamIO<sub>2</sub> hardware, BACnet backup and restore services for the controller's configuration information, Andover Continuum backup to flash functions, an editor for setting and changing MAC IDs on an MS/TP network, a "learn" function for Andover Continuum controllers on a field bus, a controller warm/cold restart function, and a controller time/date editor.

*Keep your BACnet system up-to-date and configured properly.*



## Easy Controller Connection

The RoamIO<sub>2</sub> hardware comes with an RJ-11 cable and a set of service port adapters. Simply connect the RoamIO<sub>2</sub> to the built-in service port on any Andover Continuum controller or room sensor equipped with a service jack using the supplied RJ-11 cable and appropriate adapter. Up to four RoamIO<sub>2</sub> service tools can be connected to the BACnet field bus simultaneously.

*Each Andover Continuum controller is a portal into the system.*

## Bluetooth Wireless Connection

Connect your Pocket PC or laptop to the RoamIO<sub>2</sub> Service Tool wirelessly using the standard onboard Bluetooth wireless adapter. A wired serial connection is also available for computers without Bluetooth.

*No longer are you tethered to the controller while balancing yourself on the top of a ladder; the wireless connection gives you the mobility you need to work efficiently.*

## Ethernet Connectivity

Furthermore, each RoamIO<sub>2</sub> comes with a license for one laptop to run the BACnet Service Tool over the Ethernet network without the RoamIO<sub>2</sub> hardware adapter.

*Plug in to any Ethernet port or wireless access point for expanded connectivity.*

## Feature History Table

<b>BACnet Service Tool Features</b>	<b>1.0</b>
BACnet Device Auto-Discovery	•
View/Edit BACnet Object	•
Set Date/Time	•
Perform Andover Continuum Learn	•
Update Controller OS	•
Rename Objects	•
BACnet Backup & Restore	•
View Trend Log Data	•
View Calendar & Schedule Events	•
View Program Status	•
Start / Stop Programs	•
Rename Objects	•
Backup to Flash	•
ROAMIO <sub>2</sub> -to-Controller Service Port Connection	•
ROAMIO <sub>2</sub> -to-PC/PocketPC Wireless Bluetooth Connection	•
Ethernet Connectivity	•

---

Copyright © 2006, TAC  
All brand names, trademarks and registered trademarks  
are the property of their respective owners. Information  
contained within this document is subject to change  
without notice. All rights reserved.

02/06

