

onSiTE PLUS



onSiTE PLUS Overview

- BACNet bCX Controller
- Continuum (Enterprise) CyberStation Compatible
- Optional local xP LCD Display / Keypad Interface
- 16 SiteStat Programmable Thermostats
- 1 Outdoor Air Temperature Sensor
- 1 Ambient Light Sensor
- 1 Pulse kWh Input
- Up to 5 Additional Temperature, RH or Digital Inputs
- 8 Digital Outputs

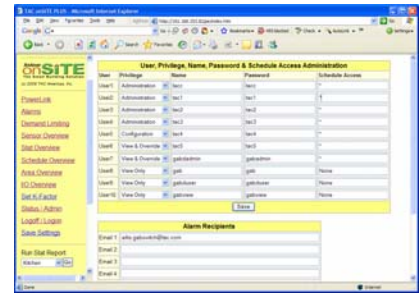
Features

- ✓ Customized to your specific heating, cooling, lighting and refrigeration needs and environment
- ✓ Low Cost - Quick ROI
- ✓ Comprehensive Feature Set
- ✓ Easy To Use

Strategic Accounts – Retail

Sophisticated Web/Internet Interface

- ✓ User Name and Password Protection
- ✓ User Levels and Privileges
- ✓ Comprehensive Alarming
- ✓ Complete Remote Control
- ✓ Optional Local LCD / Keypad Interface
- ✓ Embedded Customer Logo and Site Identification



Heating and Cooling Control

- ✓ Intelligent, programmable, networked Thermostats
- ✓ RTU's and Heat Pumps
- ✓ Day, Night, Day of Week and Holiday Schedules
- ✓ Multi-Zone Temperature Control
- ✓ Cooler, Freezer Temperature and RH Monitoring and Alarming

Digital Lighting Control

- ✓ Digital Output / Dry Contact Relays
- ✓ Day, Night, Day of Week and Holiday Schedules
- ✓ Programmable Turn On Delay
- ✓ Pushbutton Timed Overrides with optional Blink
- ✓ Automatic Outdoor Low Light Detection and Outdoor Lighting Activation

Square D PowerLink Motorized Breaker Panel Control

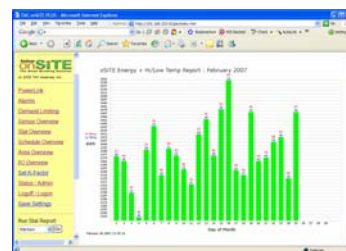
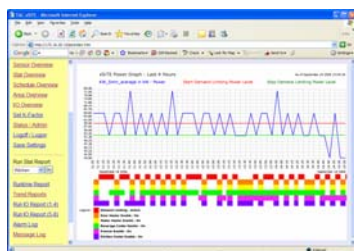
- ✓ No Modbus interface controller required - directly connects to PowerLink Panel
- ✓ Easy to use Web Interface
- ✓ Automatic Panel and Breaker Discovery
- ✓ Multi-Zone Configurations
- ✓ Breaker and Zone Overrides
- ✓ Flexible Day of Week and Holiday Schedules
- ✓ Pushbutton Zone Overrides
- ✓ Automatic Outdoor Low Light Detection and Outdoor Lighting Activation

Breaker	Circuit Name	Status	
2	Ice Machine	On	Edit
4	Roof Sign #1	On	Edit
6	Roof Sign #2	Off	Edit
8	Soffit North	On	Edit
10	Soffit East	Off	Edit

Energy Management

- ✓ Power Monitoring and Reporting
- ✓ Power Demand Limiting*
- ✓ Programmable Set Points and Hours of Operation

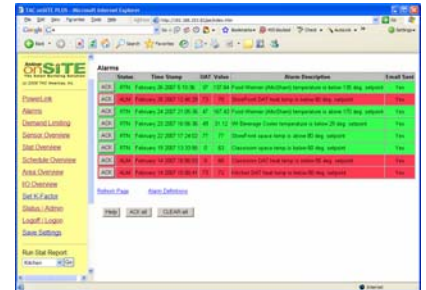
*OnSiTE PLUS Demand Limiting provides curtailing of power consumption during peak power periods by systematically turning off compressors, heaters and any equipment that can be digitally controlled to shed load. The "Temperature Priority" staging mode uses temperature sensors to determine which equipment to turn off and which equipment to keep running during power demand limiting periods. The "Round Robin" staging mode provides timed load shedding when temperature sensors are not available. Thermostat set point setbacks contribute to the system-wide approach to reducing power consumption during peak loads. Built-in failsafe parameters and algorithms insure system functionality to prevent undesirable effects.



Strategic Accounts – Retail

Alarming

- ✓ Cooler and Freezer High and Low Temperature Alarms
- ✓ Space and Discharge Air Temperature High and Low Temperature Alarms
- ✓ Relative Humidity High and Low Percentage Alarms
- ✓ Peak and Threshold Power Level Alarms
- ✓ Digital Input Alarms
- ✓ Digital Output Manual Override Alarms
- ✓ Alarm Delay Timers
- ✓ Alarm Emailing
- ✓ Active Alarm Web Page with Alarm Acknowledgements
- ✓ Alarm Indicator Lamp



Reporting

- ✓ Heating and Cooling Stage Runtime Reports
- ✓ Relative Runtime Graph
- ✓ User Selectable, Dual Point Trend Graphs
- ✓ 20 Trend Graph Presets
- ✓ Energy Consumption Graphs with Daily High and Low Temperatures
- ✓ Power Graphs with Equipment Demand Limiting Control Indication
- ✓ Tabular History of Thermostat Settings, Outside Air Temperature, kWh and Digital Outputs
- ✓ Alarm History

Built-in Features

- ✓ Real-time Clock with Automatic Daylight Savings Time Correction
- ✓ Sunrise and Sunset Time of Day Calculations Based on Longitude and Latitude
- ✓ Battery and Non-volatile Memory (NVRAM) Backup
- ✓ Thermostat and PowerLink Communication Message Logs
- ✓ Optional Dial-In Remote Access and Diagnostics

Value Beyond Measure

- Technical Support by the Product Development Team
- Customization for your Specific Needs
- TAC Name and Reputation

