

Andover Continuum Integration with Stentofon IP Interface

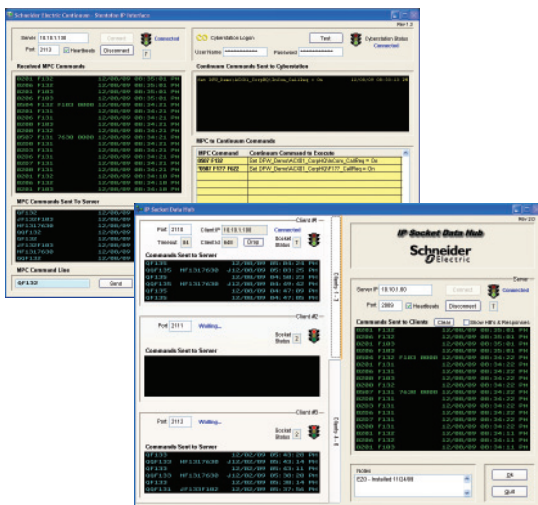
The Andover Continuum – Stentofon IP Interface provides a simple, yet powerful interface for trapping Stentofon intercom events and triggering Andover Continuum Plain English commands.



The interface software is installed on individual Andover Continuum workstations (maximum of six) and connects to a Stentofon AlphaCom Exchange across the network via an IP socket. Each workstation can be configured to respond to all, or specific Stentofon events.

Interface features include:

- Real-time Stentofon event trapping with Andover Continuum command triggering
- Stentofon – Andover Continuum bi-directional data interface
- Stentofon AlphaCom Exchange connection monitoring for high reliability
- Automatic Stentofon AlphaCom Exchange connection retry after connection loss
- Stentofon – Andover Continuum transaction data logging
- Built-in Andover Continuum Command Line with command stack
- Built-in Stentofon Command Line with command stack
- Andover Continuum Plain English – configuration samples
- Easy to install, configure and commission
- Compatible with all versions of Andover Continuum



With a minimum of time and effort, you can configure the interface to:

- Pop-up Andover Continuum graphics with live video
- Execute Andover Continuum command/control sequences
- Capture and route intercom call requests to a work queue
- Initiate, answer or disconnect calls between remote and master stations

Please Note:

The Andover Continuum – Stentofon IP Interface is licensed per Andover Continuum workstation and licenses can be purchased individually, or in packs of three. Currently, a maximum of six Andover Continuum workstations can interact with a single Stentofon AlphaCom Exchange.

Make the most of your energysm

